

# Honda GASPRO SXT™ Exhaust Gas Purifier Mufflers

FOR GASOLINE AND PROPANE FUELED ENGINES USED IN  
CONSTRUCTION, POWER GENERATION AND TUNNELING APPLICATION

**CATALYTIC  
EXHAUST**  
PRODUCTS LTD.

## Why Choose Catalytic Exhaust?

- Fastest lead times in the industry
- Honda Exhaust Purifier mufflers are in stock ready to ship
- Low exhaust restrictions
- Easy installation
- Competitive pricing
- Proven technology for over 25 years
- Tortuous core design is superior in reducing harmful pollutants up to 90%+

## The Cause

Honda gasoline and propane fueled single and twin cylinder engines produce a number of harmful pollutants in the engine combustion chamber during normal operation. These pollutants include: Carbon Monoxide (CO), Hydrocarbons (HC) and Nitrogen Oxides (NOx). OSHA and MOL regulations require that these harmful pollutants be reduced to minimal levels.

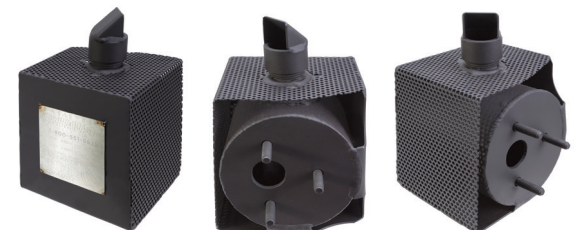
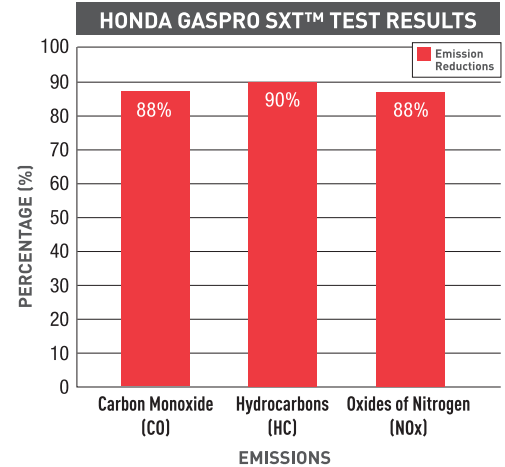
## The Practical Solution

The use of a Honda GASPRO SXT exhaust purifier muffler will allow equipment operators to comply with all OSHA and MOL regulations. The Honda GASPRO SXT is easy to install, custom built to fit your engine and available at an affordable price.

By installing our Honda GASPRO SXT exhaust purifier muffler, Carbon Monoxide (CO), Hydrocarbons (HC) and Nitrogen Oxides (NOx) can be reduced by 80-90%+, which helps in meeting required emissions regulations.

## Technical Features

1. High Efficiency "Tortuous" Flowpath Catalytic Core
2. High Quality Catalytic Coating
3. Superior Thermal And Physical Strength
4. Low Exhaust Gas Restriction



## Selecting The Correct Honda GASPRO SXT™ Exhaust Gas Purifier Muffler

In order to correctly select the proper Honda GASPRO SXT™ exhaust gas purifier muffler, the following information is usually required:

- A.** The Honda engine model number
- B.** The maximum horsepower rating of the Honda engine
- C.** The serial number of the Honda engine
- D.** The Honda engine muffler part number



## Honda Exhaust Gas Purifier Muffler List

HONDA ENGINE MOTOR MODEL	GROSS ENGINE HP	HONDA OEM MUFFLER PART NUMBER
HONDA GX31	1.5 HP	18310-ZM3-800
HONDA GX35	1.6 HP	18310-Z0Z-801
HONDA GX100	3 HP	18310-ZM0-000
HONDA GX100	3 HP	18310-Z0D-V20
HONDA GX120/140/160	3-5 HP	18310-ZF1-000
HONDA GX200	6.5 HP	18310-ZL0-000
HONDA GX240	8 HP	18310-ZE2-W00
HONDA GX270	9 HP	18310-ZE2-013
HONDA GX340-GX390	11-13 HP	18310-ZE2-U90
HONDA GXV340	11 HP	18310-2E9-003
HONDA GX340	11 HP	18310-ZD1-E31
HONDA GX440	15 HP	18310-Z2E-000
HONDA GX610	18 HP	18310-ZJ1-003
HONDA GX620 K1	20 HP	18310-ZJ1-003
HONDA GX620	20 HP	18310-ZJ1-802
HONDA GX630	23 HP	18310-Z6L-003
HONDA GX630	23 HP	17368-5X7-496
HONDA GX670	24 HP	18310-ZJ1-003
HONDA GX670	24 HP	18310-ZJ1-013
HONDA GX610/620K1/670	18-24 HP	18310-ZJ1-891
HONDA GX610/620K1/670	18-24 HP	18310-ZN1-801
HONDA GX610/620K1/670	18-24 HP	18310-ZJ1-10000



### CONTACT US

TEL: 1.800.551.5525 • FAX: 905.799.9771  
 sales@catalyticexhaust.ca • www.catalyticexhaust.com

**CATALYTIC**  
**EXHAUST**  
 PRODUCTS LTD.